

SCIP Updates

Changes in SCIP Database Requirements

Presented by:
Bruce Calder



Overview - Agenda - SCIP Database Requirements Update

- Introduction
- SCIP Compliance Process
 - Product and component templates
- Component Grouping
 - Draft guidance
 - Rules
 - Examples
 - Templates
- Product Grouping
 - Rules
 - Examples
- Dataset update in October
 - # of components
 - Made in EU
 - REACH SVHC list
- Q&A



Webinar is 50 minutes with 10
minutes of Q&A
(hopefully)

(Formerly REACH SVHC Database)

- **Substances of Concern** In articles, as such or in complex objects (**P**roducts)
- Database
 - Manufacturers to register products and their SVHCs in products in IUCLID by Jan 5 2021
- Update
 - V0 Version - Available
 - V1 Version - October 2020

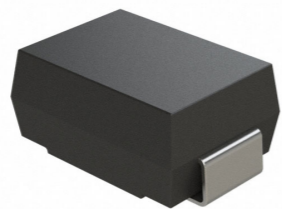
Substance of Concern Database - Claigan

Product Declaration

From April 1
Claigan webinar

Complex Product

GPC Code - 665679012749
850940 - Machinery and mechanical appliances...



Pb
2 instances
0.1% to 100%

Component
/w SVHC

Component
/w SVHC

Plastic - polyethylene foam
2 instances

Component
/w SVHC

Copper > Brass
1 instance

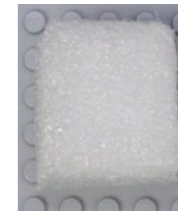
Component
/w SVHC

Plastic
Thermoset
Silicone
8 instances

ADCA

0.1 to 100%

Avoid breathing dust or particles
May cause allergy or asthma symptoms or breathing difficulties if inhaled.



Pb

1 to 10%

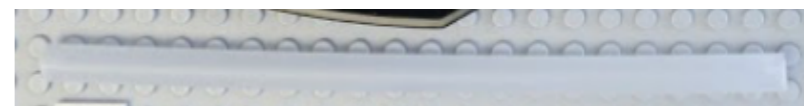
Avoid prolonged direct contact with skin during use
Wash hands after contact
Keep out of reach of children
Do not mix with municipal waste



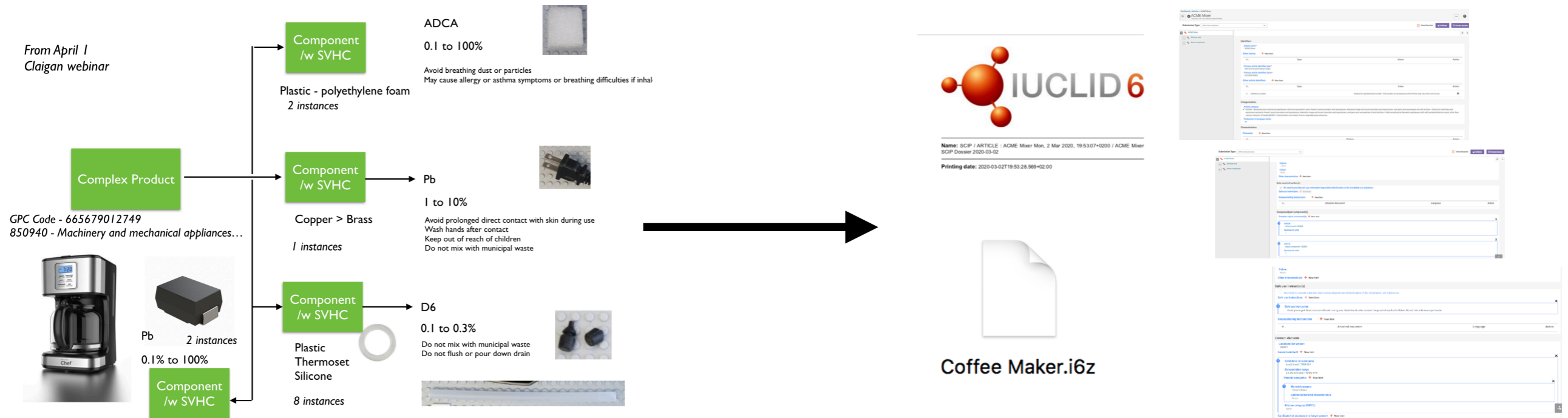
D6

0.1 to 0.3%

Do not mix with municipal waste
Do not flush or pour down drain



End Goal



Practical Plan

- Starting Point - Two (2) Templates
 - Product template (Excel)
 - Component templates (Excel and .i6z)

Product Template

A	B	C
Identifiers	Article Name	Stainless Steel Coffee Maker, 12-Cup
Primary Article Identifier Type	GPC (Universal Product Code)	665679012749
Company	IUCLID ID	
Product IUCLID #	Product IUCLID ID	
	Article Category	851671 - Electro-thermic coffee or tea makers, domestic
	Production in European Union	No
Safe Use Instruction	Safe use instruction (s)	See component safe use instructions
<i>optional</i>	Characteristic	Declaration contained here is to the best of ACME's ability. Individual units may have more or less of each REACH SVHC components then shown here.
<i>optional</i>	Model(s)	
<i>optional</i>	image (filename)	
Linked article	Linked article 1	Brass Component
	# of occurrences of article 1	0
	Linked article 2	Closed cell foam
	# of occurrences of article 2	2
	Linked article 3	Silicone Component
	# of occurrences of article 3	5
	Linked article 4	Aluminum Component
	# of occurrences of article 4	0

Component Templates

- Aluminium Component - AC01 - 20200330.i6z
- Brass Component - BC01 - 20200330.i6z
- Button Cell Battery - BCB01 - 20200330.i6z
- Closed Cell Foam - F001 - 20200330.i6z
- External Plastic Component - PC01 - 20200330.i6z
- Flexible Circuit Board - PCB01 - 20200401.i6z
- Heatshrink - HS01 - 20200330.i6z
- High Temp Solder - HTS01 - 20200330.i6z
- Plastic Bag - PB01 - 20200401.i6z
- Polyimide Film - PI01 - 20200401.i6z



	B	C	D
Article Name	Closed Cell Foam	Silicone Component	
part number	FO01	SI01	
Article Category	390110 - Plastics and articles thereof; rubber and articles thereof > Plastics and articles thereof > Polymers of ethylene, in primary forms > Polyethylene having a specific gravity of less than 0.94	40169340 - Gaskets, washers and other seals	
Production in European Union	unwilling to disclose	unwilling to disclose	
Safe use instruction (s)	Avoid breathing dust or particles May cause allergy or asthma symptoms or breathing difficulties if inhaled.	Do not mix with municipal waste Keep out of water supplies and sewers	
Candidate List Version	2020/01	2020/01	
Candidate List Entry / Substance	Diazene-1,2-dicarboxamide (C,C'-azodi(toramide)) (ADCA) EC# 208-702-8 CAS# 123-17-3	Dodecamethylcyclohexasioxane EC# 208-702-8 CAS# 610-91-6	
Concentration range	> 0.1% w/w and ≤ 100% w/w.	> 0.1% w/w and < 0.3% w/w.	
Material category	plastic (and polymers) - polyethylene, high	rubber and elastomers - silicone rubber	

Product Template

- Product template
 - Simple and non-technical excel sheet
 - Single column to complete per product

Product Template

A	B	C
Identifiers	Article Name	Stainless Steel Coffee Maker, 12-Cup
Primary Article Identifier Type	GPC (Universal Product Code)	665679012749
Company	IUCLID ID	
Product IUCLID #	Product IUCLID ID	
	Article Category	851671 - Electro-thermic coffee or tea makers, domestic
	Production in European Union	No
Safe Use Instruction	Safe use instruction (s)	See component safe use instructions
<i>optional</i>	Characteristic	Declaration contained here is to the best of ACME's ability. Individual units may have more or less of each REACH SVHC components then shown here.
<i>optional</i>	Model(s)	
<i>optional</i>	image (filename)	
Linked article	Linked article 1	<u>Brass Component</u>
	# of occurrences of article 1	0
	Linked article 2	<u>Closed cell foam</u>
	# of occurrences of article 2	2
	Linked article 3	<u>Silicone Component</u>
	# of occurrences of article 3	5
	Linked article 4	<u>Aluminum Component</u>
	# of occurrences of article 4	0

Product Template

A	B	C
Identifiers	Article Name	Stainless Steel Coffee Maker, 12-Cup
Primary Article Identifier Type	GPC (Universal Product Code)	665679012749
Company	IUCLID ID	
Product IUCLID #	Product IUCLID ID	
	Article Category	851671 - Electro-thermic coffee or tea makers, domestic
	Production in European Union	No
Safe Use Instruction	Safe use instruction (s)	See component safe use instructions
<i>optional</i>	Characteristic	Declaration contained here is to the best of ACME's ability. Individual units may have more or less of each REACH SVHC components then shown here.
<i>optional</i>	Model(s)	
<i>optional</i>	image (filename)	
Linked article	Linked article 1	<u>Brass Component</u>
	# of occurrences of article 1	0
	Linked article 2	<u>Closed cell foam</u>
	# of occurrences of article 2	2
	Linked article 3	<u>Silicone Component</u>
	# of occurrences of article 3	5
	Linked article 4	<u>Aluminum Component</u>
	# of occurrences of article 4	0

Component Template

- Product template
 - Excel and i6z template for each component type with an SVHC
 - Highly technical
 - But only ~40 common SVHC declarable components
 - Easy to outsource to technical experts
 - Very re-usable
 - Needed no matter what your solutions is
 - Testing
 - Data gathering
 - Engineering evaluation

Component Templates

Aluminium Component - AC01 - 20200330.i6z			
Brass Component - BC01 - 20200330.i6z			
Button Cell Battery - BCB01 - 20200330.i6z			
Closed Cell Foam - F001 - 20200330.i6z			
External Plastic Component - PC01 - 20200330.i6z			
Flexible Circuit Board - PCB01 - 20200401.i6z			
Heatshrink - HS01 - 20200330.i6z			
High Temp Solder - HTS01 - 20200330.i6z			
Plastic Bag - PB01 - 20200401.i6z			
Polyimide Film - PI01 - 20200401.i6z			

	B	C	D	
Article Name	Closed Cell Foam		Silicone Component	Br
part number	F001		SI01	Br
Article Category	30110 - Plastics and articles thereof; rubber and articles thereof > Plastics and articles thereof > Polymers of ethylene, in primary forms > Polyethylene having a specific gravity of less than 0.94		40168340 - Gaskets, washers and other seals	74 pa 59
Production in European Union	unwilling to disclose		unwilling to disclose	ur
Safe use instruction (s)	Avoid breathing dust or particles May cause allergy or asthma symptoms or breathing difficulties if inhaled.		Do not mix with municipal waste Keep out of water supplies and sewers	Av us W K D D
Candidate List Version		2020/01		2020/01
Candidate List Entry / Substance	Diazene-1,2-dicarboxamide (C,C'-isozodiformamide) (ADCA) EC# 204-620-8 CAS# 123-77-3		Dodecamethylcyclohexasiloxane EC# 208-782-8 CAS# 540-97-6	Le
Concentration range	> 0.1% w/w and ≤ 100% w/w.		> 0.1% w/w and < 0.3% w/w.	z
Material category	plastic (and polymers) - polyethylene, high		rubber and elastomers - silicone rubber	m

Component Template

Identifiers	Article Name	Silicone Component	Brass Component
Product IUCLID #			
Primary Article Identifier Type	reference number ▼	SI01	BC01
Other Article Identifier Type	other: ▼	silicone washers, gaskets, seals, tubes, wires, o-rings, and similar silicone components	brass stand offs, connectors, tubing, prongs, and other brass components
	Article Category	39100000 - Plastics and articles thereof; rubber and articles thereof > Plastics and articles thereof > Silicones in primary forms	741999 - Base metals and articles of base metal > Copper and articles thereof > Other articles of copper > Other>Other
	Production in European Union	unwilling to disclose ▼	unwilling to disclose ▼
Safe Use Instructions	Safe use instruction (s)	Do not mix with municipal waste Keep out of water supplies and sewers	Avoid prolonged direct contact with skin during use Wash hands after contact Keep out of reach of children Do not swallow Do not mix with municipal waste
Concern Element	Candidate List Version	2020/01 ▼	2020/01 ▼
	Candidate List Entry / Substance	Dodecamethylcyclohexasiloxane EC# 208-762-8 CAS# 540-97-6 ▼	Lead EC# 231-100-4 CAS# 7439-92-1 ▼
	Concentration range	> 0.1% w/w and < 0.3% w/w; ▼	≥ 1.0% w/w and < 10.0% w/w; ▼
	Material category	rubber and elastomers - silicone rubber ▼	metal - brass ▼

Likely not needed in next version of IUCLID (Candidate List Version)

Grouping of Components

- Group of similar declarable subcomponents in a product declaration
- Original request from small and medium enterprise trade associations
 - “There is a need to develop criteria that allows grouping of similar components/articles into one notification.”

Grouping of Components

- Components
 - Grouping of similar components instead of listing each one specifically
- New guidance being published
 - Will include allowed grouping of similar components in a declaration
 - Example - Brass components

Product Template

A	B	C
Identifiers	Article Name	Stainless Steel Coffee Maker, 12-Cup
Primary Article Identifier Type	GPC (Universal Product Code)	665679012749
Company	IUCLID ID	
Product IUCLID #	Product IUCLID ID	
	Article Category	851671 - Electro-thermic coffee or tea makers, domestic
	Production in European Union	No
Safe Use Instruction	Safe use instruction (s)	See component safe use instructions
<i>optional</i>	Characteristic	Declaration contained here is to the best of ACME's ability. Individual units may have more or less of each REACH SVHC components then shown here.
<i>optional</i>	Model(s)	
<i>optional</i>	image (filename)	
Linked article	Linked article 1	<u>Brass Component</u>
	# of occurrences of article 1	0
	Linked article 2	<u>Closed cell foam</u>
	# of occurrences of article 2	2
	Linked article 3	<u>Silicone Component</u>
	# of occurrences of article 3	5
	Linked article 4	<u>Aluminum Component</u>
	# of occurrences of article 4	0

Component Template

Identifiers	Article Name	Silicone Component	Brass Component
Product IUCLID #			
Primary Article Identifier Type	reference number ▼	SI01	BC01
Other Article Identifier Type	other: ▼	silicone washers, gaskets, seals, tubes, wires, o-rings, and similar silicone components	brass stand offs, connectors, tubing, prongs, and other brass components
	Article Category	39100000 - Plastics and articles thereof; rubber and articles thereof > Plastics and articles thereof > Silicones in primary forms	741999 - Base metals and articles of base metal > Copper and articles thereof > Other articles of copper > Other>Other
	Production in European Union	unwilling to disclose ▼	unwilling to disclose ▼
Safe Use Instructions	Safe use instruction (s)	Do not mix with municipal waste Keep out of water supplies and sewers	Avoid prolonged direct contact with skin during use Wash hands after contact Keep out of reach of children Do not swallow Do not mix with municipal waste
Concern Element	Candidate List Version	2020/01 ▼	2020/01 ▼
	Candidate List Entry / Substance	Dodecamethylcyclohexasiloxane EC# 208-762-8 CAS# 540-97-6 ▼	Lead EC# 231-100-4 CAS# 7439-92-1 ▼
	Concentration range	> 0.1% w/w and < 0.3% w/w; ▼	≥ 1.0% w/w and < 10.0% w/w; ▼
	Material category	rubber and elastomers - silicone rubber ▼	metal - brass ▼

Likely not needed in next version of IUCLID (Candidate List Version)

Grouping of Components

Basic Guidelines

- Requirements for grouping
 - Can be described accurately by the generic name
 - Share the same customs code
 - Share the same SVHC
 - Share the same materials code
 - Simple article

Grouping of Components

Example

- Brass Components
 - Name: Brass components
 - Sub name - brass stand offs, connectors, tubing, prongs, and other brass components
 - Customs code: 741999
 - SVHC: Pb
 - Materials category: metal - brass
 - Simple article: Cannot be reasonably disassembled into additional different components

Grouping of Components

Not acceptable

- Metal Components
 - Name: Metal components
 - Sub name - stand offs, connectors, tubing, prongs, and other components made of aluminum, brass, or steel
 - Customs code: **NOT THE SAME**
 - SVHC: Pb
 - Materials category: **NOT THE SAME**
 - Simple article: Cannot be reasonably disassembled into additional different components

INVALID

Grouping of Components

Not acceptable

- Power Supply
 - Name: Power supply
 - Sub name - External power supplies
 - Customs code: 85044090
 - SVHC: Pb
 - Materials category: ?
 - Simple article: **INVALID**. Can be reasonably disassembled into additional different components

INVALID

Supplier Data Gathering

- Engineering evaluation and testing are more effective than supplier data gathering
- But
- Supplier data gathering also requires components templates
 - Supplier data
 - Resistor - Pb (not a declarable SVHC)
 - Diode - Pb (not a declarable SVHC)
 - Inrush Current Limiter - Pb (high temp solder component template)
 - Brass connector - Pb (brass component template)
 - Heat shrink - dechlorane plus (heat shrink template)

Grouping of Products

- Group of similar products under one SCIP product listing
- Original request from small and medium enterprise trade associations
 - “There is a need to develop criteria that allows grouping of similar components/articles into one notification.”

Grouping of Products

- Professional products only
 - Consumer products expected to still need to be by UPC / Barcode or similar.
- Requirements for grouping of products
 - Can be described accurately by a common name
 - Share the same customs code
 - Share the same SVHC containing components

Grouping of Products

Example

- SN Model Analyzer
 - Name: SN Model Analyzer
 - Sub name - includes SN1000X, SN2000X, and SN3000X
 - Customs code: 847149
 - SVHC containing components
 - Brass components (Pb)
 - Steel components (Pb)
 - High temp solder (Pb)
 - Closed cell foam (ADCA)
 - Cermet trimmer potentiometer (PbO)

Repeat - Practical Plan

- Starting Point - Two (2) Templates
 - Product template (Excel)
 - Component templates (Excel and .i6z)

Product Template

A	B	C
Identifiers	Article Name	Stainless Steel Coffee Maker, 12-Cup
Primary Article Identifier Type	GPC (Universal Product Code)	665679012749
Company	IUCLID ID	
Product IUCLID #	Product IUCLID ID	
	Article Category	851671 - Electro-thermic coffee or tea makers, domestic
	Production in European Union	No
Safe Use Instruction	Safe use instruction (s)	See component safe use instructions
<i>optional</i>	Characteristic	Declaration contained here is to the best of ACME's ability. Individual units may have more or less of each REACH SVHC components then shown here.
<i>optional</i>	Model(s)	
<i>optional</i>	image (filename)	
Linked article	Linked article 1	Brass Component
	# of occurrences of article 1	0
	Linked article 2	Closed cell foam
	# of occurrences of article 2	2
	Linked article 3	Silicone Component
	# of occurrences of article 3	5
	Linked article 4	Aluminum Component
	# of occurrences of article 4	0



Component Templates

- Aluminium Component - AC01 - 20200330.i6z
- Brass Component - BC01 - 20200330.i6z
- Button Cell Battery - BCB01 - 20200330.i6z
- Closed Cell Foam - F001 - 20200330.i6z
- External Plastic Component - PC01 - 20200330.i6z
- Flexible Circuit Board - PCB01 - 20200401.i6z
- Heatshrink - HS01 - 20200330.i6z
- High Temp Solder - HTS01 - 20200330.i6z
- Plastic Bag - PB01 - 20200401.i6z
- Polyimide Film - PI01 - 20200401.i6z

B	C	D
Article Name	Closed Cell Foam	Silicone Component
part number	FO01	SI01
Article Category	390110 - Plastics and articles thereof; rubber and articles thereof - Plastics and articles thereof - Polymers of ethylene, in primary forms - Polyethylene having a specific gravity of less than 0.94	40169340 - Gaskets, washers and other seals
Production in European Union	unwilling to disclose	unwilling to disclose
Safe use instruction (s)	Avoid breathing dust or particles May cause allergy or asthma symptoms or breathing difficulties if inhaled.	Do not mix with municipal waste Keep out of water supplies and sewers
Candidate List Version	2020/01	2020/01
Candidate List Entry / Substance	Diazene-1,2-dicarboxamide (C,C'-azodi(toramide)) (ADCA) EC# 208-702-8 CAS# 610-91-6	Dodecylmethylethylhexafluorooxane EC# 208-702-8 CAS# 610-91-6
Concentration range	> 0.1% w/w and ≤ 100% w/w.	> 0.1% w/w and < 0.3% w/w.
Material category	plastic (and polymers) - polyethylene, high	rubber and elastomers - silicone rubber

of Component Fields

- # of components
 - Becoming optional
 - But still commonly used instead of listing each component

A	B	C
Identifiers	Article Name	Stainless Steel Coffee Maker, 12-Cup
Primary Article Identifier Type	GPC (Universal Product Code)	665679012749
Company	IUCLID ID	
Product IUCLID #	Product IUCLID ID	
	Article Category	851671 - Electro-thermic coffee or tea makers, domestic
	Production in European Union	No
Safe Use Instruction	Safe use instruction (s)	See component safe use instructions
<i>optional</i>	Characteristic	Declaration contained here is to the best of ACME's ability. Individual units may have more or less of each REACH SVHC components then shown here.
<i>optional</i>	Model(s)	
<i>optional</i>	image (filename)	
Linked article	Linked article 1	<u>Brass Component</u>
	# of occurrences of article 1	0
	Linked article 2	<u>Closed cell foam</u>
	# of occurrences of article 2	2

Close enough is fine

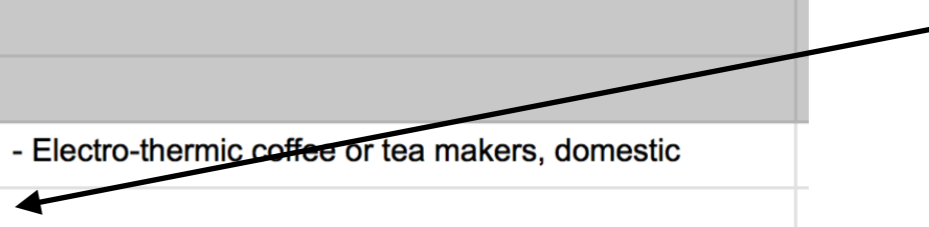


Made in the EU

- Currently
 - Y / N / Withheld
- Changing to
 - Yes (EU) / No (not in EU) / both EU and not EU / Not available

A	B	C
Identifiers	Article Name	Stainless Steel Coffee Maker, 12-Cup
Primary Article Identifier Type	GPC (Universal Product Code)	665679012749
Company	IUCLID ID	
Product IUCLID #	Product IUCLID ID	
	Article Category	851671 - Electro-thermic coffee or tea makers, domestic
	Production in European Union	No
Safe Use Instruction	Safe use instruction (s)	See component safe use instructions
<i>optional</i>	Characteristic	Declaration contained here is to the best of ACME's ability. Individual units may have more or less of each REACH SVHC components then shown here.
<i>optional</i>	Model(s)	
<i>optional</i>	image (filename)	
Linked article	Linked article 1	<u>Brass Component</u>
	# of occurrences of article 1	0

Changing



Component Template

Identifiers	Article Name	Silicone Component	Brass Component
Product IUCLID #			
Primary Article Identifier Type	reference number ▼	SI01	BC01
Other Article Identifier Type	other: ▼	silicone washers, gaskets, seals, tubes, wires, o-rings, and similar silicone components	brass stand offs, connectors, tubing, prongs, and other brass components
	Article Category	39100000 - Plastics and articles thereof; rubber and articles thereof > Plastics and articles thereof > Silicones in primary forms	741999 - Base metals and articles of base metal > Copper and articles thereof > Other articles of copper > Other>Other
	Production in European Union	unwilling to disclose ▼	unwilling to disclose ▼
Safe Use Instructions	Safe use instruction (s)	Do not mix with municipal waste Keep out of water supplies and sewers	Avoid prolonged direct contact with skin during use Wash hands after contact Keep out of reach of children Do not swallow Do not mix with municipal waste
Concern Element	Candidate List Version	2020/01 ▼	2020/01 ▼
	Candidate List Entry / Substance	Dodecamethylcyclohexasiloxane EC# 208-762-8 CAS# 540-97-6 ▼	Lead EC# 231-100-4 CAS# 7439-92-1 ▼
	Concentration range	> 0.1% w/w and < 0.3% w/w; ▼	≥ 1.0% w/w and < 10.0% w/w; ▼
	Material category	rubber and elastomers - silicone rubber ▼	metal - brass ▼

Being removed in final version. Not sure of how SVHC list will be handled going forward

Repeat - Practical Plan

- Starting Point - Two (2) Templates
 - Product template (Excel)
 - Component templates (Excel and .i6z)

Product Template

A	B	C
Identifiers	Article Name	Stainless Steel Coffee Maker, 12-Cup
Primary Article Identifier Type	GPC (Universal Product Code)	665679012749
Company	IUCLID ID	
Product IUCLID #	Product IUCLID ID	
	Article Category	851671 - Electro-thermic coffee or tea makers, domestic
	Production in European Union	No
Safe Use Instruction	Safe use instruction (s)	See component safe use instructions
<i>optional</i>	Characteristic	Declaration contained here is to the best of ACME's ability. Individual units may have more or less of each REACH SVHC components then shown here.
<i>optional</i>	Model(s)	
<i>optional</i>	image (filename)	
Linked article	Linked article 1	Brass Component
	# of occurrences of article 1	0
	Linked article 2	Closed cell foam
	# of occurrences of article 2	2
	Linked article 3	Silicone Component
	# of occurrences of article 3	5
	Linked article 4	Aluminum Component
	# of occurrences of article 4	0



Component Templates

- Aluminium Component - AC01 - 20200330.i6z
- Brass Component - BC01 - 20200330.i6z
- Button Cell Battery - BCB01 - 20200330.i6z
- Closed Cell Foam - F001 - 20200330.i6z
- External Plastic Component - PC01 - 20200330.i6z
- Flexible Circuit Board - PCB01 - 20200401.i6z
- Heatshrink - HS01 - 20200330.i6z
- High Temp Solder - HTS01 - 20200330.i6z
- Plastic Bag - PB01 - 20200401.i6z
- Polyimide Film - PI01 - 20200401.i6z

B	C	D
Article Name	Closed Cell Foam	Silicone Component
part number	FO01	SI01
Article Category	390110 - Plastics and articles thereof; rubber and articles thereof - Plastics and articles thereof - Polymers of ethylene, in primary forms - Polyethylene having a specific gravity of less than 0.94	40169340 - Gaskets, washers and other seals
Production in European Union	unwilling to disclose	unwilling to disclose
Safe use instruction (s)	Avoid breathing dust or particles May cause allergy or asthma symptoms or breathing difficulties if inhaled.	Do not mix with municipal waste Keep out of water supplies and sewers
Candidate List Version	2020/01	2020/01
Candidate List Entry / Substance	Diazene-1,2-dicarboxamide (C,C'-azodi(toramide)) (ADCA) EC# 208-702-8 CAS# 610-91-6	Dodecylmethylcyclohexasiloxane EC# 208-702-8 CAS# 610-91-6
Concentration range	> 0.1% w/w and ≤ 100% w/w.	> 0.1% w/w and < 0.3% w/w.
Material category	plastic (and polymers) - polyethylene, high	rubber and elastomers - silicone rubber

Claigan - What do we need to quote?

- **Laboratory testing**

- Email us picture or weblink of product to info@claigan.com

- **Monthly / Quarterly Updates**

- Email us at info@claigan.com

- **SCIP Web Demonstration and Template**

- Email us at info@claigan.com



Q&A